

Technical Specification Fiber Optic Splice Closure

HTSC-136

Customer Approval			
	Name	Signature	Date
Approved by			

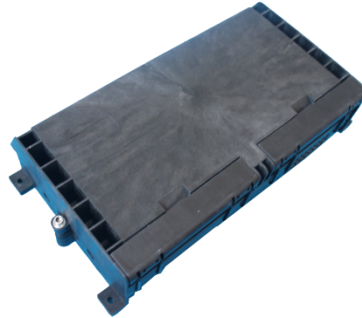
Contents

1. General	2
1.1 Description	2
1.2 Standards Comply	2
1.3 Applications Environment	2
2. Characteristics	3
3. Specifications	3
4. Product Picture	4
5. Configuration	4
5.1 Optical splice trays	4
5.2 Standard Accessories	5
5.3 Optional Accessories	6
6. Package	6

1. General**1.1 Description**

Fiber optic splice closure is mainly applicable to the straight-through and branching of aerial cables, buried cables and duct cables, as well as the protection on cable joints.

Production type	Classification
HTSC-136	Fiber optic splice closure



Appearance of HTSC-136

1.2 Standards Comply

The product is designed, manufactured and tested according to the standards as follows:

ITU-T L.13	Performance requirements for passive optical nodes: Sealed closures for outdoor environments
------------	--

1.3 Applications Environment

Item	Value
Operation temperature	-40 °C ~ +65 °C
Installation temperature	-15 °C ~ +40 °C
Storage temperature	-45 °C ~ +75 °C

2. Characteristics

Installation and reentry with a minimum of tools

Easy to be opened or closed

Re-enterable and reusable

All hardware are captured

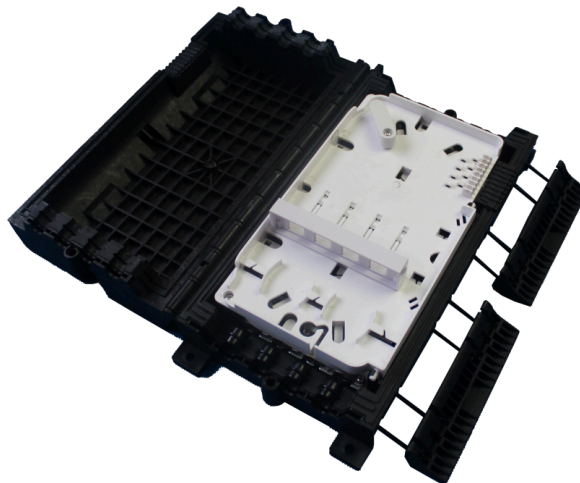
Capable for loading 1:8, 1:16 PLC splitter

Capable for max. 16pcs SC adaptors

3. Specifications

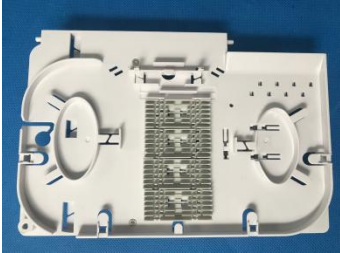
Item	Specifications	Note
Material of housing	High-strength PP+GF	
Material of internal components	High-strength ABS	
Material of metal accessory	High-quality stainless steel	
External dimension(mm)	387mm x 203mm x88mm	
Color	Black	
Number of ports	8	
Cable ports/Max.diameter of cable(mm)	8 main cable ports: each for 1 cable with max 14mm. 8 drop cable ports: each for diameter 3mm or 3x2mm drop cables.	
Sealing type	Mechanical	
IP grade	IP67	
Splicing capacity(Max)	48	Optional as request

4. Product Picture


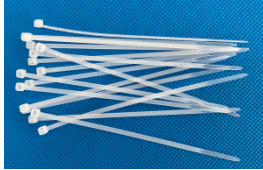

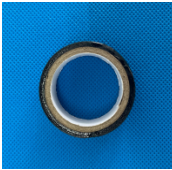





HTSC-136 product picture

5. Configuration**5.1 Optical splice trays**

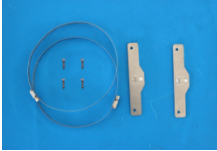


No	Model	Pic	Capacity	Note
1	T073A		48F(2 layer)	

5.2 Standard Accessories

No.	Name	Reference picture	Quantity	Remark
1	Heat-shrinkable protection sleeve		1 bag	L=45mm
2	Nylon cable tie		16 pcs	L=120mm
3	Sealing tape		1 rolls	Black
4	Installation tape		1 roll	black

5	Buffer tube for bunchy fiber		n pcs	Each piece: OD=4.5mm, L=50cm QTY: n=trays number
6	Special wrench		1set	
7	Installation manual		1pc	English

5.3 Optional Accessories

No.	Name	Model	Reference picture	Quantity	Remark
1	Earthing deriving device			1pc	
2	Pole-mounting kit	BZ09		1 set	
3	Aerial-mounting kit	JK02		1 set	
4	Wall-mounting kit			1 set	

6. Package

Standard

Double corrugated carton, 52*41*50 CM, 8 in carton, about 18.8Kg