

Technical Specification

Fiber Optic Cable Distribution Box

HTTPB-X16

Customer Approval			
	Name	Signature	Date
Approved by			

Contents

1. General	2
1.1 Description	2
1.2 Standards Comply	2
1.3 Applications Environment	2
2. Characteristics	3
3. Specifications	3
3.1 Mechanical specifications	3
3.2 Optical specifications	4
4. Configuration	4
4.1 Optical splice trays	4
4.2 Accessory section	5
4.3 Optional Accessories	5
5. Product Picture	6
6. Package	6

1. General

1.1 Description

The equipment is used as a termination point for the feeder cable to connect with drop cable in FTTx communication network system. The fiber splicing, splitting, distribution can be done in this box, and meanwhile it provides solid protection and management for the FTTx network building.

Production type	Classification
HTTB-X16	Fiber optic cable distribution box



Appearance of HTTB-X16

1.2 Standards Comply

The product is designed, manufactured and tested according to the standards as follows:

ITU-T L.13	Performance requirements for passive optical nodes: Sealed closures for outdoor environments
------------	--

1.3 Applications Environment

Item	Value
Operation temperature	-40 °C ~ +65 °C
Installation temperature	-15 °C ~ +40 °C
Storage temperature	-45 °C ~ +75 °C

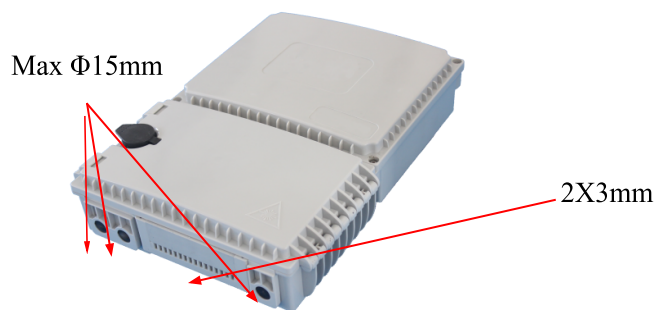
2. Characteristics

- 1) Accommodate PLC Splitter Module ;
- 2) Anti-UV(Ultra Violet) ;
- 3) 3 inlet ports, 16 outlet ports ;
- 4) Ability to store uncut cables ;
- 5) Economic design with plastic adaptor panel ;
- 6) Accommodate SC /APC, SC/UPC adaptor ;
- 7) It is applicable for wall-mounted,indoor or outdoor ;
- 8) Max capacity(F): 24F

3. Specifications

3.1 Mechanical specifications

Item	Specifications	Note
Material of housing	High-strength PC+ABS	
Material of internal components	High-strength ABS	
Material of metal accessory	High-quality stainless steel	
External dimension(mm)	351*261*93	
Color	Gray, black, white	
Number of distribution cable ports	3	
Number of drop cable ports	16	
3 Main Cable Ports	for cables max diameter 15mm	
Fiber cable dimension of drop port(mm)	2*3MM	
Capacity(Max)	24 Splices	
Max quantity splitter	2 pcs of 1x8 Blade type (LGX type) splitter	

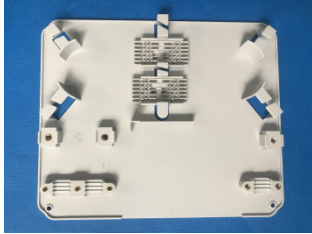


3.2 Optical specifications


Item	Test Method	Specification	Note
Insertion loss(dB)	IEC61300-3-4-Method B	Mean \leq 0.1dB · Maximum \leq 0.3dB	
Return loss(dB)	IEC61300-3-6-Method 1	APC \geq 60dB · UPC \geq 50dB	
Random connection	IEC61300-3-4	Mean \leq 0.15dB · Maximum \leq 0.3dB	
Splitter		Refer to insert type splitter technical specification	
Repeatability	IEC 61300-2-2 500 cycles	During the test the difference between the initial measurement and each of the measurements after one cycle must be less than 0.20 dB, and should be cleaned otherwise, with a limit of 25 cleanings	

4. Configuration

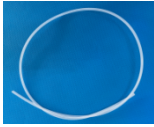


4.1 Optical splice trays

No	Model	Pic	Capacity	Note
1	T060A		24F(2 layer)	


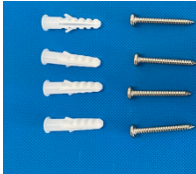
4.2 Accessory section

No.	Name	Reference picture	Quantity	Remark
1	Heat-shrinkable protection sleeve		1 bag	L=45mm
2	Nylon cable tie		12 pcs	L=120mm

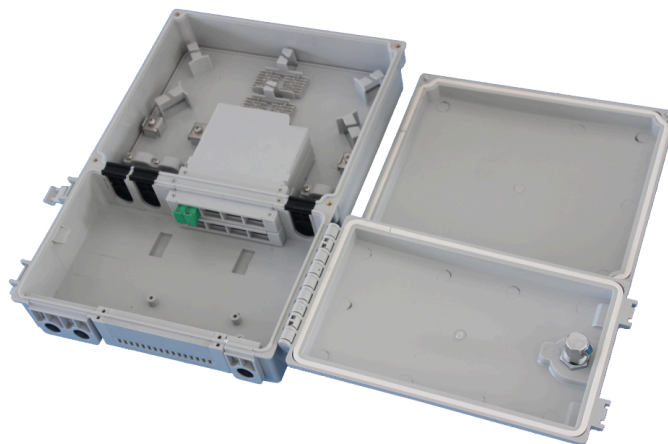
HTTB-X16 Technical Specification

3	Buffer tube for bunchy fiber		1 roll	OD=4.5mm, L=50 cm
4	Installation tape		1 roll	
5	Installation manual		1pc	English

4.3 Optional Accessories

No.	Name	Model	Reference picture	Quantity	Remark
1	Pole-mounting kit	BZ13		1 set	
2	Wall-mounting kit			1 set	

5. Product Picture



HTTB-X16 product picture

6. Package

Standard

Double corrugated carton, 560*415*700 mm, 10 in carton, about 19 Kg.