

Technical Specification Fiber Optic Splice Closure

HTSC-F04

Customer Approval			
	Name	Signature	Date
Approved by			

Contents

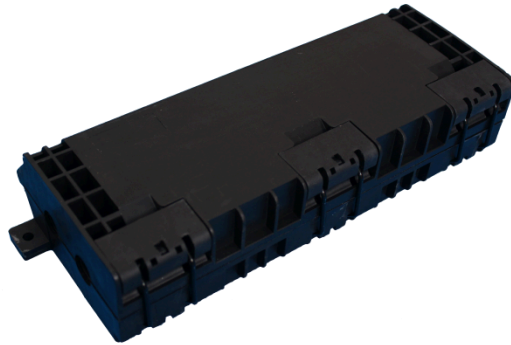
1. General	2
1.1 Description	2
1.2 Standards Comply	2
1.3 Applications Environment	2
2. Characteristics	3
3. Specifications	3
4. Product Picture	4
5. Configuration	4
5.1 Optical splice trays	4
5.2 Standard Accessories	5
5.3 Optional Accessories	6
6. Package	6

1. General

1.1 Description

Fiber optic splice closure is mainly applicable to the straight-through and branching of aerial cables, buried cables and duct cables, as well as the protection on cable joints.

Production type	Classification
HTSC-F04	Fiber optic splice closure



Appearance of HTSC-F04

1.2 Standards Comply

The product is designed, manufactured and tested according to the standards as follows:

ITU-T L.13	Performance requirements for passive optical nodes: Sealed closures for outdoor environments
------------	--

1.3 Applications Environment

Item	Value
Operation temperature	-40 °C ~ +65 °C
Installation temperature	-15 °C ~ +40 °C
Storage temperature	-45 °C ~ +75 °C

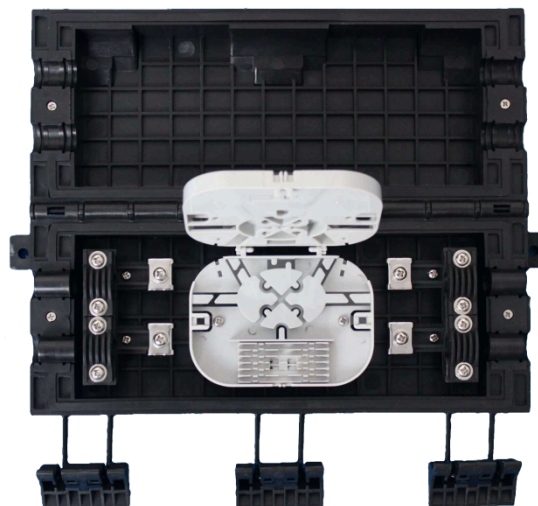
2. Characteristics

Compact design for FTTH application.
 Hinged structure
 Sheath retention & central strength member fasten system included.
 Ribbed closure construction-lightweight plastic offers strength and resistance to chemical and U.V attack
 Installation and reentry with a minimum of tools
 All hardware are included
 RoHS compliance

3. Specifications

Item	Specifications	Note
Material of housing	High-strength PP+GF	
Material of internal components	High-strength ABS	
Material of metal accessory	High-quality stainless steel	
External dimension(mm)	315mm x 120mm x 62mm	
Color	Black	
Number of ports	4	
Cable ports/Max.diameter of cable(mm)	4 ports: each port for cable with max.16mm	
Sealing type	Mechanical	
Splicing capacity(Max)	24	Optional as request


4. Product Picture




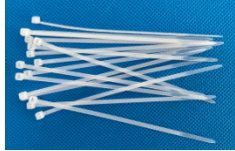

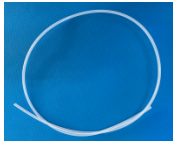

HTSC-F04 product picture

5. Configuration



5.1 Optical splice trays

No	Model	Pic	Capacity	Note
1	T051A		12F(2 layer)	

5.2 Standard Accessories

No.	Name	Reference picture	Quantity	Remark
1	Heat-shrinkable protection sleeve		1 bag	L=45mm
2	Nylon cable tie		6 pcs	L=120mm
3	Sealing tape		1 rolls	Black
4	Buffer tube for bunchy fiber		n pcs	Each piece: OD=4.5mm, L=50cm QTY: n=trays number
5	Installation manual		1pc	English

5.3 Optional Accessories

No.	Name	Model	Reference picture	Quantity	Remark
1	Aerial-mounting kit	JK02	 A photograph showing two sets of aerial-mounting hardware. Each set consists of a metal U-shaped bracket with a threaded hole at the top and a smaller hole at the bottom, and a corresponding metal pin with a matching hole.	1 set	
2	Wall-mounting kit		 A photograph showing two sets of wall-mounting hardware. Each set consists of a white plastic mounting bracket with a hole and a metal screw with a matching hole.	1 set	

6. Package

Standard

Double corrugated carton, 59*36*47 CM, 28 in carton, about 25 Kg.