

Technical Specification Fiber Optic Splice Closure

HTSC-FD0

Yangtze Optical Fibre and Cable Joint Stock Limited Company

All rights reserved

| Customer Approval | | | |
|-------------------|------|-----------|------|
| | Name | Signature | Date |
| Approved by | | | |

Contents

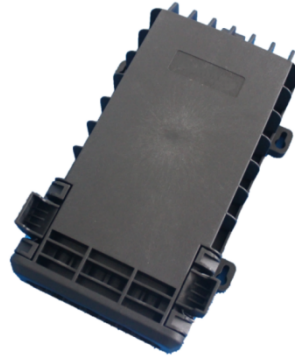
| | |
|------------------------------|---|
| 1. General | 2 |
| 1.1 Description | 2 |
| 1.2 Standards Comply | 2 |
| 1.3 Applications Environment | 2 |
| 2. Characteristics | 3 |
| 3. Specifications | 3 |
| 4. Product Picture | 4 |
| 5. Configuration | 4 |
| 5.1 Optical splice trays | 4 |
| 5.2 Standard Accessories | 5 |
| 5.3 Optional Accessories | 5 |
| 6. Package | 5 |

1. General

1.1 Description

Fiber optic splice closure is mainly applicable to the straight-through and branching of aerial cables, buried cables and duct cables, as well as the protection on cable joints.

| Production type | Classification |
|-----------------|----------------------------|
| HTSC-FD0 | Fiber optic splice closure |



Appearance of HTSC-FD0

1.2 Standards Comply

The product is designed, manufactured and tested according to the standards as follows:

| | |
|------------|--|
| ITU-T L.13 | Performance requirements for passive optical nodes: Sealed closures for outdoor environments |
|------------|--|

1.3 Applications Environment

| Item | Value |
|--------------------------|-----------------|
| Operation temperature | -40 °C ~ +65 °C |
| Installation temperature | -15 °C ~ +40 °C |
| Storage temperature | -45 °C ~ +75 °C |

2. Characteristics

May be used for cut, uncut and taut sheath applications.

May be used for all fiber optic cable.

Installation and reentry with a minimum of tools

Easy to be opened or closed

Re-enterable and reusable

All hardware are captived

Capable for loading 1:4 PLC splitter

Capable for max. 6pcs SC adaptors

Protection class: IP68

RoHS compliance

3. Specifications

| Item | Specifications | Note |
|---------------------------------------|--|---------------------|
| Material of housing | High-strength PP+GF | |
| Material of internal components | High-strength ABS | |
| Material of metal accessory | High-quality stainless steel | |
| External dimension(mm) | 223mm x 138mm x 68mm | |
| Color | Black | |
| Number of ports | 2 | |
| Cable ports/Max.diameter of cable(mm) | 2 main cable ports: each for 1 cable with max. diameter 4mm. 6 drop cable ports: each for 1 cable with diameter 3mm or 3x2mm. | |
| Sealing type | Mechanical | |
| Splicing capacity(Max) | 24 | Optional as request |

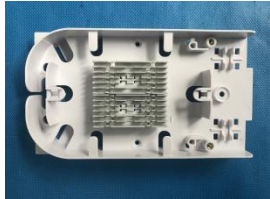
4. Product Picture




HTSC-FD0 product picture

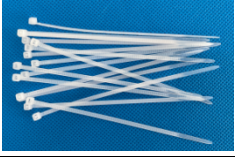


5. Configuration

5.1 Optical splice trays


| No | Model | Pic | Capacity | Note |
|----|-------|---|--------------|------|
| 1 | T099A |  | 24F(2 layer) | |

5.2 Standard Accessories

| No. | Name | Reference picture | Quantity | Remark |
|-----|-----------------------------------|---|----------|--------|
| 1 | Heat-shrinkable protection sleeve |  | 1 bag | L=45mm |

| | | | | |
|---|---------------------|---|--------|---------|
| 2 | Nylon cable tie |  | 12 pcs | L=120mm |
| 3 | Sponge article |  | 1pc | |
| 4 | Installation manual |  | 1pc | English |

5.3 Optional Accessories

| No. | Name | Model | Reference picture | Quantity | Remark |
|-----|-------------------|-------|--|----------|--------|
| 2 | Wall-mounting kit | |  | 1 set | |

6. Package

Standard

Double corrugated carton, 54*45.5*51 CM, 42 in carton, about 20 Kg.