

Technical Specification

Fiber Optic Cable Distribution Box

HTTPB-X40

Customer Approval			
	Name	Signature	Date
Approved by			

Contents

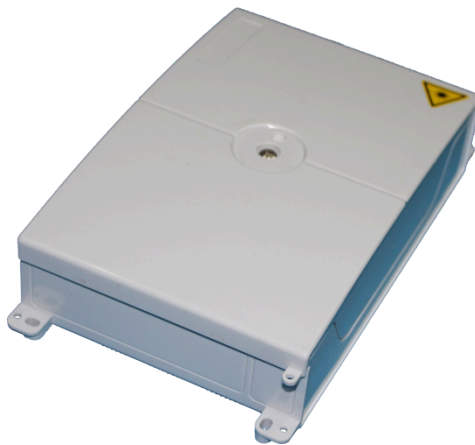
1. General	2
1.1 Description	2
1.2 Standards Comply	2
1.3 Applications Environment	2
2. Characteristics	3
3. Specifications	3
3.1 Mechanical specifications	3
3.2 Optical specifications	4
4. Configuration	4
4.1 Optical splice trays	4
4.2 Accessory section	5
4.3 Optional Accessories	6
5. Product Picture	6
6. Package	6

1. General

1.1 Description

The equipment is used as a termination point for the feeder cable to connect with drop cable in FTTx communication network system. The fiber splicing, splitting, distribution can be done in this box, and meanwhile it provides solid protection and management for the FTTx network building.

Production type	Classification
HTTB-X40	Fiber optic cable distribution box



Appearance of HTTB-X40

1.2 Standards Comply

The product is designed, manufactured and tested according to the standards as follows:

ITU-T L.13	Performance requirements for passive optical nodes: Sealed closures for outdoor environments
------------	--

1.3 Applications Environment

Item	Value
Operation temperature	-40 °C ~ +65 °C
Installation temperature	-15 °C ~ +40 °C
Storage temperature	-45 °C ~ +75 °C

2. Characteristics

Compact design (126 x 200 x 50 mm)

Free breathing box for indoor use

In-line and butt configuration possible for main cable

Wrap around cable seals for main cable and drops

Not required to cut loop-through fibers from riser cable

Window cuts as small as 70 mm possible with certain cable constructions

Compatible with mechanical splice, and heat shrink protective sleeves

Transient free customer provisioning

Drop cables are terminated individually

Separate storage of un-connected fibers from spliced drop fibers

Possibility to integrate PON splitters

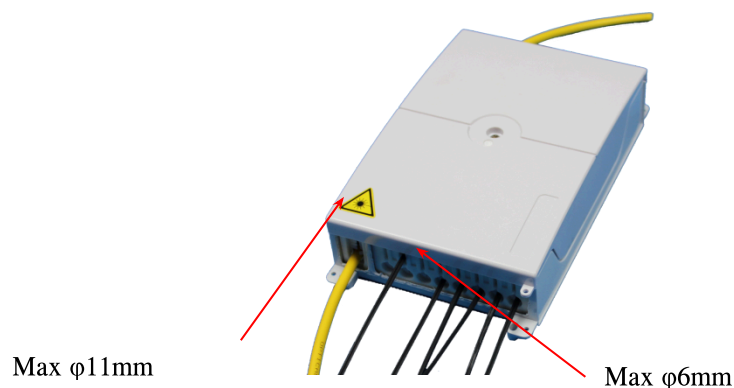
Main cable up to 11 mm diameter, Drop cable up to 6 mm diameter

Easy drop cable termination on strain relief device

3. Specifications

3.1 Mechanical specifications

Item	Specifications	Note
Material of housing	High-strength PC+ABS	
Material of internal components	High-strength ABS	
Material of metal accessory	High-quality stainless steel	
External dimension(mm)	126*200*50	
Color	Gray, black, white	
Number of distribution cable ports	2	
Number of drop cable ports	16	
2 Main Cable Ports	for cables max diameter 12mm	
Fiber cable dimension of drop port(mm)	Φ6	
Capacity(Max)	12 Splices	
Max quantity splitter	1x4, 1x8 PLC splitter	

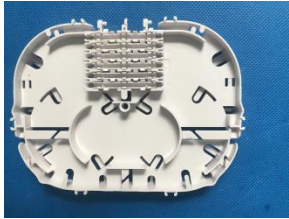



3.2 Optical specifications


Item	Test Method	Specification	Note
Insertion loss(dB)	IEC61300-3-4-Method B	Mean \leq 0.1dB · Maximum \leq 0.3dB	
Return loss(dB)	IEC61300-3-6-Method 1	APC \geq 60dB · UPC \geq 50dB	
Random connection	IEC61300-3-4	Mean \leq 0.15dB · Maximum \leq 0.3dB	
Splitter		Refer to insert type splitter technical specification	
Repeatability	IEC 61300-2-2 500 cycles	During the test the difference between the initial measurement and each of the measurements after one cycle must be less than 0.20 dB, and should be cleaned otherwise, with a limit of 25 cleanings	

4. Configuration

4.1 Optical splice trays


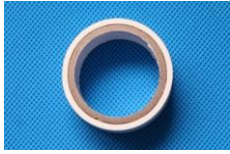


No	Model	Pic	Capacity	Note
1	T053A		12F(2 layer)	
2	T054A		12F(2 layer)+1PLC splitters	

4.2 Accessory section


No.	Name	Reference picture	Quantity	Remark
1	Heat-shrinkable protection sleeve		1 bag	L=45mm



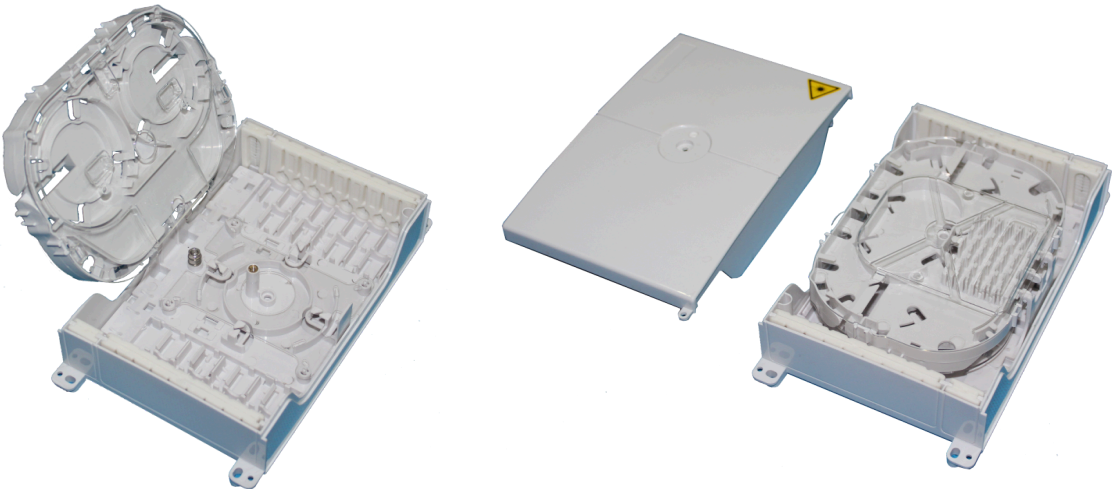
HTTB-X40 Technical Specification

2	Nylon cable tie		12 pcs	L=120mm,
3	Buffer tube for bunchy fiber		1 roll	OD=4.5mm, L=50 cm
4	Installation tape		1 roll	
5	Cable fixing base		16 pcs	
6	Installation manual		1pc	English

4.3 Optional Accessories

No.	Name	Model	Reference picture	Quantity	Remark
1	Wall-mounting kit			1 set	

5. Product Picture



HTTB-X40 product picture

6. Package

Standard

Double corrugated carton, 680*260*350 mm, 30 in carton, about 16.5Kg.