

Technical Specification Fiber Optic Splice Closure

HTSC-F03

Customer Approval			
	Name	Signature	Date
Approved by			

Contents

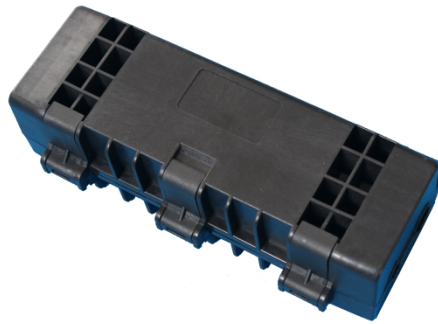
1. General	2
1.1 Description	2
1.2 Standards Comply	2
1.3 Applications Environment	2
2. Characteristics	3
3. Specifications	3
4. Product Picture	4
5. Configuration	4
5.1 Optical splice trays	4
5.2 Standard Accessories	5
5.3 Optional Accessories	6
6. Package	6

1. General

1.1 Description

Fiber optic splice closure is mainly applicable to the straight-through and branching of aerial cables, buried cables and duct cables, as well as the protection on cable joints.

Production type	Classification
HTSC-F03	Fiber optic splice closure



Appearance of HTSC-F03

1.2 Standards Comply

The product is designed, manufactured and tested according to the standards as follows:

ITU-T L.13	Performance requirements for passive optical nodes: Sealed closures for outdoor environments
------------	--

1.3 Applications Environment

Item	Value
Operation temperature	-40 °C ~ +65 °C
Installation temperature	-15 °C ~ +40 °C
Storage temperature	-45 °C ~ +75 °C

2. Characteristics

Compact design for FTTH application.

Hinged structure

Sheath retention & central strength member fasten system included.

Ribbed closure construction-lightweight plastic offers strength and resistance to chemical and U.V attack

Installation and reentry with a minimum of tools

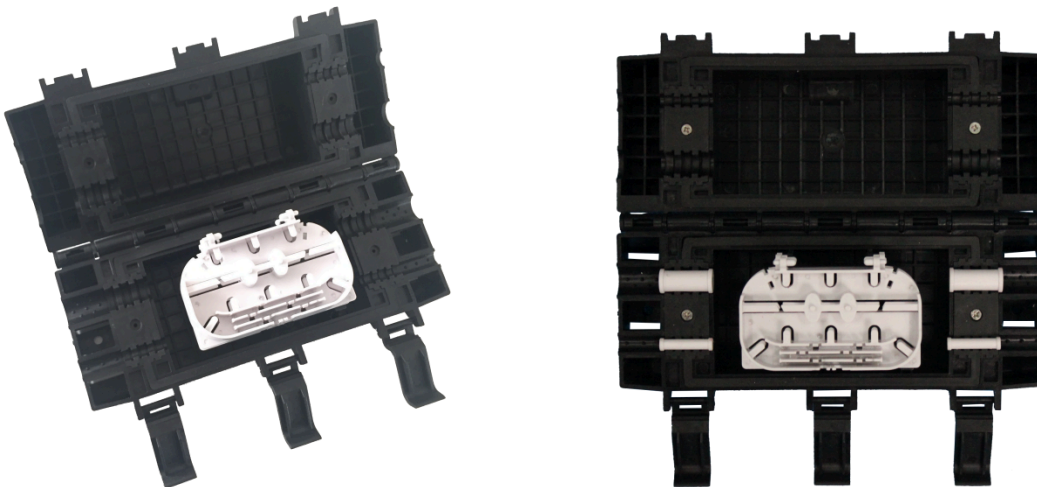
All hardware are included

RoHS compliance

3. Specifications

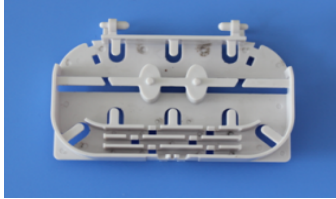
Item	Specifications	Note
Material of housing	High-strength PP+GF	
Material of internal components	High-strength ABS	
Material of metal accessory	High-quality stainless steel	
External dimension(mm)	200mm x 94mm x 60mm	
Color	Black	
Number of ports	4	
Cable ports/Max.diameter of cable(mm)	4 ports: 2 ports for main cable with 9.5 - 12mm, 2 ports for drop cable with 4 - 6mm.	
Sealing type	Mechanical	
Splicing capacity(Max)	12	Optional as request

4. Product Picture


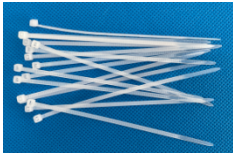


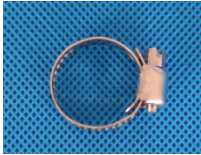


HTSC-F03 product picture

5. Configuration**5.1 Optical splice trays**



No	Model	Pic	Capacity	Note
1	T047A		6F(2 layer)	

5.2 Standard Accessories

No.	Name	Reference picture	Quantity	Remark
1	Heat-shrinkable protection sleeve		1 bag	L=40mm
2	Nylon cable tie		6 pcs	L=120mm.
3	Sealing tape		1 rolls	Black
4	Buffer tube for bunchy fiber		n pcs	Each piece: OD=4.5mm, L=50cm QTY: n=trays number
5	Hose hoops		4pcs	

6	Installation manual		1pc	English
---	---------------------	---	-----	---------

5.3 Optional Accessories

No.	Name	Model	Reference picture	Quantity	Remark
1	Aerial-mounting kit	JK02		1 set	
2	Wall-mounting kit			1 set	

6. Package

Standard Double corrugated carton, 67.5*27.5*32 CM, 30 in carton, about 13.6 Kg.