

Technical Specification
Fiber Optic Cable Distribution Box

FTTH-308

Customer Approval			
	Name	Signature	Date
Approved by			

Contents

1. General	2
1.1 Description	2
1.2 Standards Comply	2
1.3 Applications Environment	2
2. Characteristics	3
3. Specifications	3
3.1 Mechanical specifications	3
3.2 Optical specifications	4
4. Configuration	4
4.1 Optical splice trays	4
4.2 Accessory section	4
4.3 Optional Accessories	5
5. Product Picture	5
6. Package	6

1. General

1.1 Description

The equipment is used as a termination point for the feeder cable to connect with drop cable in FTTH communication network system. The fiber splicing, splitting, distribution can be done in this box, and meanwhile it provides solid protection and management for the FTTH network building.

Production type	Classification
FTTH-308	Fiber optic cable distribution box



Appearance of FTTH-308

1.2 Standards Comply

The product is designed, manufactured and tested according to the standards as follows:

ITU-T L.13	Performance requirements for passive optical nodes: Sealed closures for outdoor environments
------------	--

1.3 Applications Environment

Item	Value
Operation temperature	-40 °C ~ +65 °C
Installation temperature	-15 °C ~ +40 °C
Storage temperature	-45 °C ~ +75 °C

2. Characteristics

Ergonomically & compact design

Ability to allow cables to enter from rear or bottom of the unit

Removable cover for easy access

Indoor use for wall mounted unit used for small and large business premises

Easily re-enter with a minimum of tools, saves time and cost

Up to 4 cores(heat shrink protective sleeve) or 2 cores(3M mechanical splices)

Can hold 2 SC simplex adaptor or 2 LC duplex adaptor

Can be used for Blown Tube cable or common cables

Three (3) cable ports , each port for one cable with maximum diameter \varnothing 10 mm

ROHS compliance

3. Specifications

3.1 Mechanical specifications

Item	Specifications	Note
Material of housing	High-strength PC+ABS	
Material of internal components	ABS	
Material of metal accessory	High-quality stainless steel	
External dimension(mm)	108*86*27	
Color	Gray, black, white	
Number of distribution cable ports	3	
Number of drop cable ports	2	
3 Main Cable Ports	3 cable ports, each port for 1 cable with max \varnothing 10mm	
Capacity(Max)	4 Splices	
simplex adaptors	2	


3.2 Optical specifications

Item	Test Method	Specification	Note
Insertion loss(dB)	IEC61300-3-4-Method B	Mean \leq 0.1dB · Maximum \leq 0.3dB	
Return loss(dB)	IEC61300-3-6-Method 1	APC \geq 60dB · UPC \geq 50dB	
Random connection	IEC61300-3-4	Mean \leq 0.15dB · Maximum \leq 0.3dB	
Splitter		Refer to insert type splitter technical specification	
Repeatability	IEC 61300-2-2 500 cycles	During the test the difference between the initial measurement and each of the measurements after one cycle must be less than 0.20 dB, and	




		should be cleaned otherwise, with a limit of 25 cleanings	
--	--	---	--



4. Configuration

4.1 Optical splice trays


No	Model	Pic	Capacity	Note
1	T079A		4F(2 layer)	

4.2 Accessory section

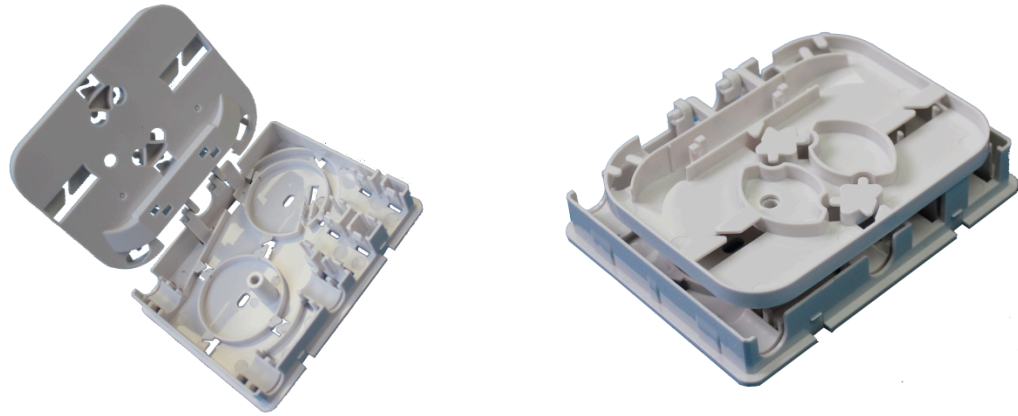
No.	Name	Reference picture	Quantity	Remark
1	Heat-shrinkable protection sleeve		1 bag	L=45mm
2	Nylon cable tie		6 pcs	L=120mm
3	Fiber optic cable plug		3pc	
4	Sponge article		1pc	

5	Slot of the optical fiber protection pipe		1pc	
6	Installation manual		1pc	English

4.3 Optional Accessories

No.	Name	Model	Reference picture	Quantity	Remark
1	Wall-mounting kit			1 set	

5. Product Picture



FTTH-308 product picture

6. Package

Standard

Double corrugated carton, 510*350*335 mm, 100 in carton, about 12.5Kg.